



A partner connecting **your business**

**to success**

Specialized Aerostructure Manufacturing Company

**H HIZEAERO**  
FOR YOUR DREAM

All great achievements in the world are  
**the result of countless small points  
coming together**

The same is true for aircraft,  
where thousands of components are  
**precisely connected to  
create a great masterpiece**

For the past 25 years, we have been  
connecting countless points, building expertise  
**as a leading aircraft structure manufacturer**

## EXPERIENCE

Over 8,000 component types(Cumulatively),  
400,000 parts produced(Annually)

\*Both metal and composite materials

Working with more than 20 global clients

## CAPABILITIES

**Providing total aircraft structure manufacturing solutions,**  
From tool design to Composite and metal part fabrication,  
surface treatment, and assembly, all in-house

## QUALITY

Trusted for quality serving clients continuously for **25 years**

## DELIVERY

**Thank You Plaque for On-Time Delivery from the Client**

“

Your dedication and teamwork in the successful  
development and timely delivery of the B787 SEC 11/FTE  
project have greatly contributed to our B787 program. We  
sincerely appreciate your efforts.



From small component production to  
structural assembly,

**We are your partner in connecting the key  
framework of your aircraft  
with the highest quality and precision**

Connecting the key framework of your aircraft

## Contents

- 01 Capabilities
- 02 Commitment to Excellence
- 03 HIZEAERO Highlights



# 01 Capabilities

- 1.1 Industry Experience & Achievements
- 1.2 Technical Expertise & Facilities
- 1.3 Skilled Workforce
- 1.4 Production Capacity

“

From part production to surface treatment and assembly

**We provide total aircraft structure manufacturing solutions**

## 01. Capabilities

### 1.1 Industry Experience & Achievements

Extensive experience from component manufacturing to structural assembly

#### HH Aircraft structure assembly

High production rates for complex shaped products: over 1,900 units delivered

##### Fixed Trailing Edge Edge

Composite and Metal parts assembly

- B787 Sec. 15
- Delivery rate: 12ss/mo.
- Material: GFRP / metals



##### Pivot Bulkhead

Composite and Metal parts assembly

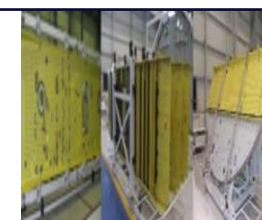
- B787 Sec. 48
- Delivery rate: 6ss/mo.
- Material : CFRP / Ti



##### Center Wing Box

Composite and Metal parts assembly

- B787 Sec. 11
- Delivery rate: 12ss/mo.
- Material: CFRP / Ti



##### Aft Body Tail Cone

Metal parts assembly

- B767 Sec. 48
- Delivery Rate: 3ss/mo.
- Material: CRES / Ti



#### HH Component manufacturing

Over 8,000 types(Cumulatively)

##### Machining



HS/VF Spar Chord, etc  
**B737**

##### Sheet Metal



Vertical Fin Dorsal RIB, etc  
**B737 / B787 / B777**

##### Composite



Winglet, etc  
**B737 / B767 / B787 / B747**



**Boeing Supplier of the year silver**



## 1.2 Technical Expertise & Facilities

High precision and productivity across all stages from tooling to assembly

### HH Full in-house production for airframe structures

Comprehensive Expertise in Large Structure Machining and Assembly



#### Tooling

- Boeing category III design & manufacturing



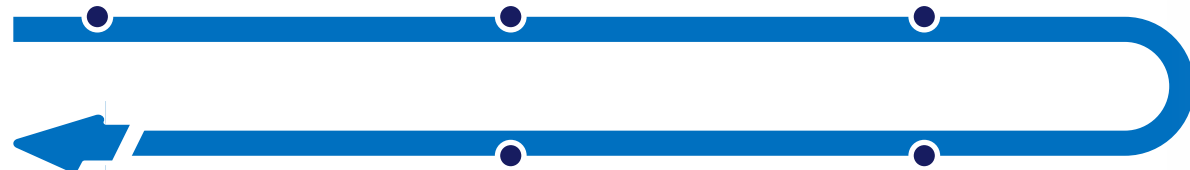
#### Machining

- Long parts and hard metal materials



#### Sheet Metal

- Complex shape & thin sheet forming



#### Assembly

- Composite-Metal
- Metal-Metal



#### Surface Treatment

- Shot peen
- Grit blast
- Surf. Treat



#### Composite Fabrication

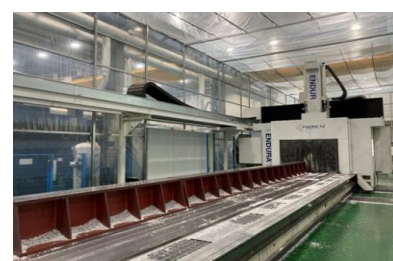
- Complex configuration fabrication
- Stable supply at high rates

### HH Equipped with the latest machinery

#### Long Part Equipment

- Machining Parts up to 20M Length

4 Units Available



Machining/Sheet  
Metal Equipment List

#### Auto Clave

- Composite Production up to 4m diameter, 12m length

3 Units Available



Composite  
Equipment List

#### Automated Surface Treatment Line

- Multi-Part Surf. Treat
- Surf. Treat for Large Parts

28 Chemical Tanks  
Available(8M)



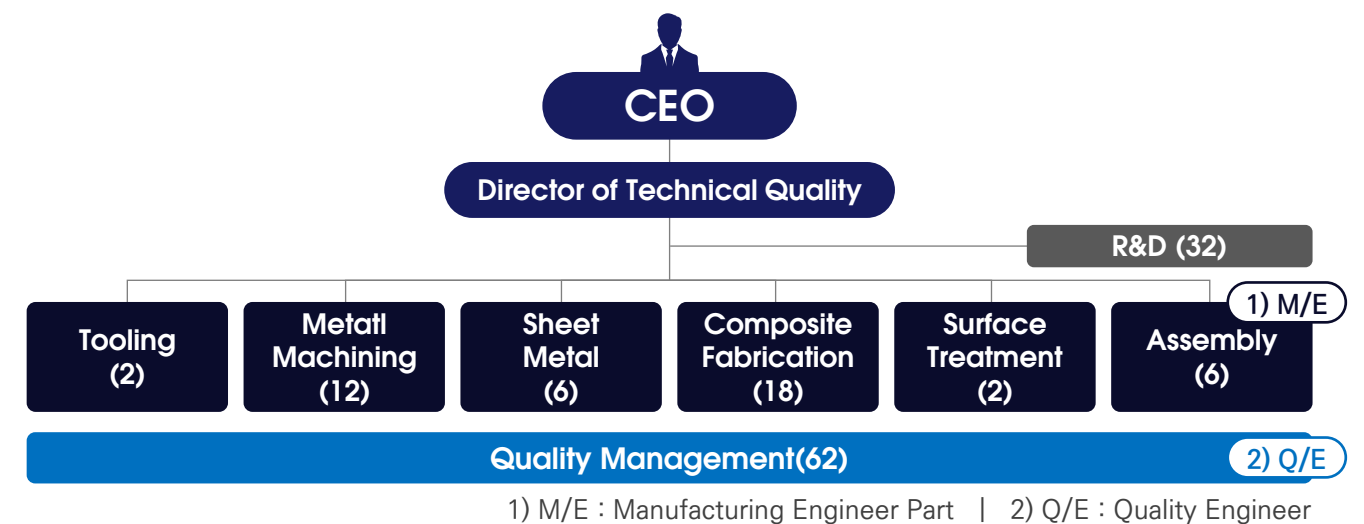
Special Process  
Approval List

## 1.3 Skilled Workforce

Comprehensive provider for Aerostructure Manufacturing

### HH Specialized teams optimizing Production Stability

- ✓ In-house Specialists for Each Process to Enhance Productivity
- ✓ Dedicated Quality Management Team Ensuring Process Integrity



### HH Highly experienced Engineers



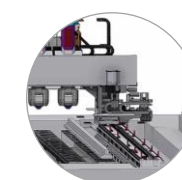
108

Skilled In-House  
Production Personnel

| Years              | Proportion |
|--------------------|------------|
| Above 20 years     | 7 (6.5%)   |
| Above 11 ~20 years | 31 (28.7%) |
| Above 6~10 years   | 28 (25.9%) |
| Less than 5 years  | 42 (38.8%) |

### HH Dedicated team for advanced aerospace R&D

3 Sectors, 11 R&D Projects Ongoing



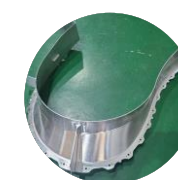
#### Ultra-precision machining technology

- Hole pattern tolerance  $\pm 0.00125$  inch



#### Automated countersink machine

- Improving productivity in composite parts



#### Machining technology for complex shape & thin components

- thickness of 0.080 inches

R&D Project List





## 1.4 Production Capacity (1/2)

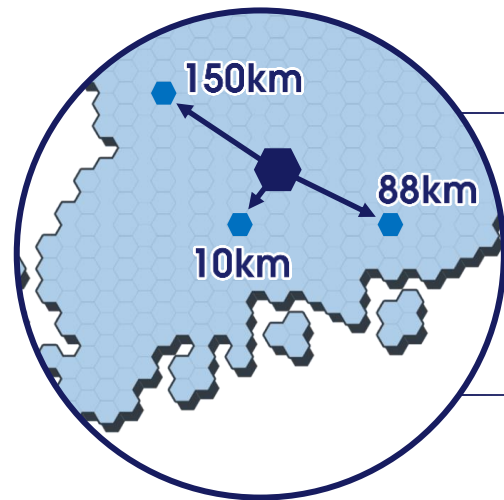
Four in-house factories ensure stable production from machining to assembly

**H** Metal & Fabrication component production capacity

**2,000**  
types

**400,000**  
units  
(Annually)

**OVER 8,000**  
types  
(Cumulatively)



Avg. Factory Transit  
**1hr by Car**



### WanJu Factory

Size  
• 14,215m<sup>2</sup>  
Process  
• Composite part fabrication



### Head Quarter(Jinju)

Size  
• 27,795 m<sup>2</sup>  
Process  
• Tooling  
• Machining  
• Sheet Metal  
• Surface Treatment



### Sacheon Factory

Size  
• 13,680m<sup>2</sup>  
Process  
• Composite Assembly



### Busan Factory

Size  
• 18,155m<sup>2</sup>  
Process  
• Metallic Assembly  
• Machining

## **H** Specialized Factories by Process



Composite Assembly



Tooling / Machining / Sheet Metal / Surface Treatment



Metallic Assembly



Composite parts fabrication

## **H** 150,403m<sup>2</sup> of Available Production Space

|                | Sacheon (m <sup>2</sup> ) | Jinju (m <sup>2</sup> ) | Busan (m <sup>2</sup> ) | Total (m <sup>2</sup> ) |
|----------------|---------------------------|-------------------------|-------------------------|-------------------------|
| Total Area     | 13,680                    | 27,795                  | 18,155                  | 59,630                  |
| Remaing Area   | 639                       | 7,914                   | 2,463                   | 11,016                  |
| Remaining Rate | 4.7%                      | 28.5%                   | 14%                     | 18.5%                   |

**Available space in Busan factory (1 of 3 bays) : 40,979 ft<sup>2</sup>**



# 02

## Commitment to Excellence

### 2.1 Proactive Customer Support

### 2.2 Quality Assurance

### 2.3 On-time Delivery

### 2.4 Competitive Pricing

“

We will never stop your production,  
**delivering high-quality result**

#### 02. Commitment to Excellence

### 2.1 Proactive Customer Support

Customer Support Team for Close Collaboration throughout the Project

#### HH End-to-End Business Support

##### Pre-Contract

###### Customer Concerns

###### Ambiguity

Will they fully understand my requirements?

###### Unpredictability

Can I manage budgeting with changing material costs and lead times?

###### Lack of Flexibility

Can we find a partner open to our terms?

###### Our Response Case

Collaboratively analyzed and validated customer needs

Promptly informed customers of price and lead time changes to mitigate risks

Worked with the customer to meet terms, including price

##### During Project

###### Customer Concerns

###### Project Delays

Will it delay our final product development/production schedule?

###### Incomplete Information

I don't want the confusion from incomplete project updates

###### Frequent Changes

Preference for a partner willing to meet our negotiation terms

###### Our Response Case

Delivered updates, resolved issues, and minimized delays collaboratively

Offered updates and meetings to ensure trust

Addressed changes, clarified costs, and ensured smooth adjustments

##### Post-Delivery

Engineers Dispatched for On-Site Repairs Upon Defects



##### Customer Support Specialist Team

- Fluent English Speakers
- Fluent Chinese Speakers
- 10+ Years' Experience Program Managers

“

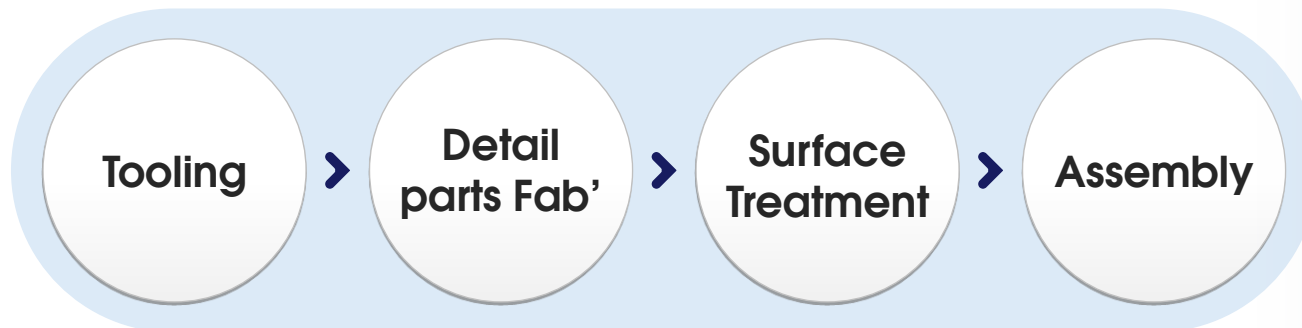
**Quality Action First**

| CEO's Philosophy

## 2.2 Quality Assurance (1/2)

Ensuring quality by fully handling all processes in-house, from machining and surface treatment to assembly

**H** Seamless, fully in-house production across all stages



Composite/Machining/Sheet metal

### Defect management system(In-house)

Commitment to Quality  
– Consistency in quality standards

### Specific issue detection and quick response

Instant resolution of issues  
– Machining tolerances  
– Sheet metal angles  
– Assembly fit issues

### Accumulation of know-how across all processes

Handling of Challenges  
– Tight tolerances  
– Complex Modifications  
– Material changes

**H** Exclusive in-house surface treatment

### Other Companies

#### Full-volume outsourcing



**Quality Degradation**  
due to overload of work for the outsourcing vendor



**Additional costs and time**  
due to rework from quality deterioration



**Surface Damage and Contamination**  
from impact during transport

VS

### HIZE AERO

#### In-house surface treatment

#### No issues with

Product damage or production delays, as processing, assembly, and surface treatment are all **handled in one facility**



## 2.2 Quality Assurance (2/2)

Proven expertise recognized by global companies and institutions

**H** Trusted for quality, serving a client continuously for 17 years

Cumulative Production Volume: 1,200 Shipsets

2007

17 Years

2024



Center Wing Box



Fixed Trailing Edge

### Recognized for excellent quality by global customers and standards organizations

- ✓ Certified to the highest standards with AS9100 and ISO 14001/45001
- ✓ Trusted by Boeing with DPD certification and NADCAP approvals,

#### General



AS9100 Rev.D



DPD-Boeing

#### Process Qualification (Composite / Metal)



Composite



NDT



Chemical



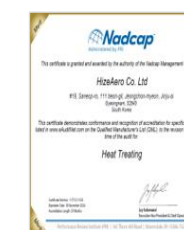
D1-4426



ISO 14001



ISO 45001



Heat Treatment



Shot Peen



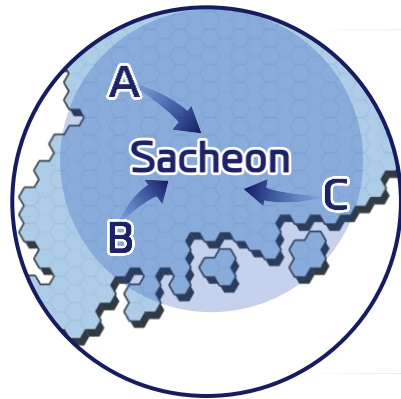
D1-4426



## 2.3 On-time Delivery

Ensuring your production never stops

### HH Reduce production time with in-house surface treatment



“  
Surf. Treat.  
Outsourcing  
concentrated among  
**Sacheon-based  
Aircraft Parts  
manufacturers**

VS

#### HIZE AERO

In-house surface treatment  
**Within 7 days**

#### Other Companies

Requires transit and wait time  
**Takes 3-4 weeks**

Potential  
Delivery delays



### HH Ensure reliable delivery with a risk management plan

Material Shortage

Equipment  
Malfunction

Out Sourcing

Act of God

#### 01 Proactive risk management for Man, Machine, and Material

Periodic review, management, and maintenance

#### 02 Quick and transparent customer communication until resolving the issue

Detail schedule control by Line-of-Balance or Inch-Stone to give full visibility to a customer

<sup>2)</sup> LOB : Line Of Balance

### HH ERP System for smooth production



#### Agile Decision-Making

With real-time monitoring of production, inventory, etc

#### Reducing resource waste

Through ERP optimization of labor, materials, and equipment

#### Enhancing quality and delivery compliance

By managing workflows digitally

#### Ensuring transparency and accountability in the production process

by recording and tracking all work history

#### Increased production speed and efficiency

by automating repetitive manual tasks

#### “ Thank You Plaque for On-Time Delivery from the Client

Your dedication and teamwork in the successful development and timely delivery of the B787 SEC 11/FTE project have greatly contributed to our B787 program. We sincerely appreciate your efforts.

| CEO of Korean Aerospace Industry

## 2.4 Competitive Pricing

We will provide the best service, stable quality and delivery at competitive prices.

### HH Enhanced productivity strengthens cost competitiveness

#### Processing Optimization

**reduce material set-up time**  
with multi machining

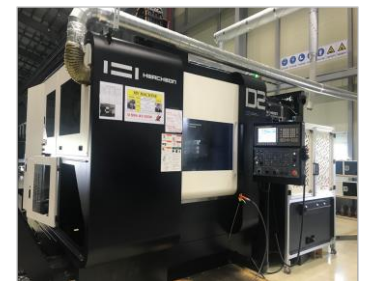
**reduce material costs**  
through near net shape & nesting

**reduce raw material waste**  
by minimizing unused sheet portions

#### Automation

**Processing runs while materials are loaded**

24-Hour Lights-Out Machining



#### CDM4) - Customized Equipment

**Reduce hole processing time**

Using CDM countersink machines and double riveting



<sup>4)</sup> CDM : Composite Drilling Maching

#### Monorail, Sliding Jig

**Increase in Monthly Production Capacity**

B787: 4 shipsets  
→ 14 shipsets



### HH Partner of choice for price-sensitive national companies



#### SAMC

B737 Horizontal Stabilizer Spar Chord

• Long part, hard metal component machining

#### Boeing Tianjin Composite

B737 Vertical Dorsal Fin

• Metal component fabrication and sub-assembly



#### Turkish Aerospace industries

B737 Vertical Dorsal Fin

• Metal component fabrication



#### Boeing Composite Malaysia

B737 FTE Metal Component

• Metal component fabrication and sub-assembly



#### TATA-Boeing

B737 Dorsal vertical fin and skin

• Long Part Machining and metal fabrication

“

**HIZEAERO combines competitive pricing with swift and responsive feedback throughout the project, making it an even better choice**

– Voice of Customer –



Connecting the key framework of your aircraft

## 3.0 HIZEAERO Highlights

A solid company with 25 years of aircraft manufacturing expertise

Economy 03.03.2020

### KB Securities Signs Lead Underwriting Agreement for HIZE Aerospace IPO

HIZEAERO Co., Ltd, founded in 1999, is a comprehensive manufacturer of aircraft components. The company develops, produces, and supplies high-value composite parts used in the main wings of Boeing's advanced B787 aircraft.



HIZE Aerospace CEO Ha Sang-heon stated, "We passed Boeing's B787 production certification as a zero-defect manufacturer, aiming to become a global leader in aerospace with our technology and patents."

- **2023** Established HIZE USA INC
- **2021** M&A DACC / renamed to HCI (Hize Composite Industries)
- **2017** Plant #3 / Busan (Metallic Assembly)
- **2016** Plant #2 / Added Special treatment & Shot Peen Facility
- **2015** IPO listed [KOSDAQ] (2015.11.25)
- **2014** Plant #2 / Added Sheet Metal Facility
- **2013** Plant #2 / Jinju (Machining /Tooling Facility Completion)
- **2008** Plant #1 / Sacheon (Composite Assembly)
- **2007** Contract for B787 Center Wing Box & Fixed Trailing Edge
- **1999** Established HIZE AERO

### Proven partner for global OEM and Tier 1 companies

#### Americas



#### Asia/Southeast Asia



#### Middle East



HIZEAERO

### Core Values

Fair and transparent corporate management

Aiming to be a world-class company

Creative Challenge Collaborative Spirit

# SUMMARY

## CAPABILITIES

### Industry Experience & Achievements

- Aircraft structure assembly
- Over 8,000 types of Component manufacturing

### Technical Expertise & Facilities

- Full in-house production for airframe structures
- Equipped with the latest machinery

### Skilled Workforce

- Specialized teams optimizing Production Stability
- Highly experienced Engineers (108 Engineers)

### Production Capacity

- 2,000 types and 400,000 units of Metal & Fabrication components annually
- Owns four production facilities covering a total area of 641,860 m<sup>2</sup>

## COMMITMENT TO EXCELLENCE

### Proactive Customer Support

- Rapid on-site dispatch to ensure your production never stops

### Quality Assurance

- Seamless, fully in-house production across all stages
- Exclusive in-house surface treatment (NO damages and production delays)
- Trusted for quality, serving a client continuously for 17 years
- Recognized for excellent quality by global customers and standards organizations

### On-time Delivery

- Reduce production time with in-house surface treatment
- Ensure reliable delivery with a risk management plan
- Seamless production powered by an advanced ERP system

### Competitive Pricing

- Enhanced productivity strengthens cost competitiveness
- Partner of choice for price-sensitive national companies
- ERP System for smooth production

## HIZEAERO HIGHLIGHT

A publicly listed company that has grown steadily for 25 years

Proven partner for global OEM and Tier 1 companies

Acquisition of DACC specialist composite part fabrication (2021)





A partner connecting your business

**to success**

